



## Our Services

Maintenance—repair  
[fruehauf.com/centres-service](http://fruehauf.com/centres-service)

Spare parts  
[fruehauf.com/servicepro](http://fruehauf.com/servicepro)

Finance  
[fruehauf.com/financement](http://fruehauf.com/financement)

Used vehicles  
[fruehauf.com/occasions](http://fruehauf.com/occasions)



Non-binding document - 384, rue Gutenberg 58320 - Pouéuges les Eaux - Do not litter

# CITY

For better manoeuvrability



24 à 28, avenue Jean Mermoz - BP 209  
89002 AUXERRE CEDEX - FRANCE  
Tél. : +33 (0) 3 86 94 42 42  
[contact@fruehauf.com](mailto:contact@fruehauf.com)

[fruehauf.com](http://fruehauf.com)

# The advantages and flexibility of the tractor-trailer combination

With its better payload, better manoeuvrability, efficient, powerful equipment, the CITY FRUEHAUF range offers performance greatly superior to the classic 4x2 and 6x2 delivery carriers.

Thanks to the load capacity of their bogies and their optimized profile, the CITY, the URBAN and the DISTRICT offer exceptional, unequalled payloads. Like the 38 T semi-trailers, known on the market for their sturdy reliability, they take full advantage of the "Designed to Last" concept.

The mechanically welded flatbed, the solid floor and the reinforced body are perfectly adapted to harsh, intensive use.



## The range:



### CITY: single-axle vehicle

- 21 pallets – 8.50 m in length
- 24 pallets – 9.85 m in length
- 27 pallets – 11.03 m in length

### URBAN: double-axle vehicle

- 27 pallets – 11.03 m in length
- 33 pallets – 13.61 m in length



### DISTRICT: triple-axle vehicle

- 33 pallets – 13.61 m



Coupling plate full width with reinforced nose



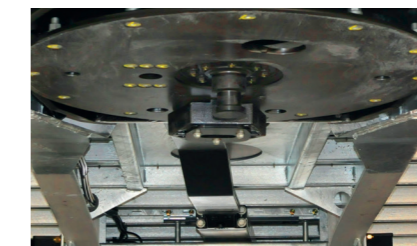
Steering mechanism access plate



Hot dip galvanized chassis



Rear axle on swivel frame

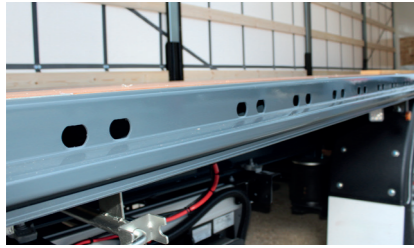


Swivel coupling plate with idler arm



Optional central, manual, or automatic lubrication

## Common options



Multifix edge



Standard siderave



2.5-tonne securing rings



Taillift



Pallet truck box



Kit for truck-mounted forklift

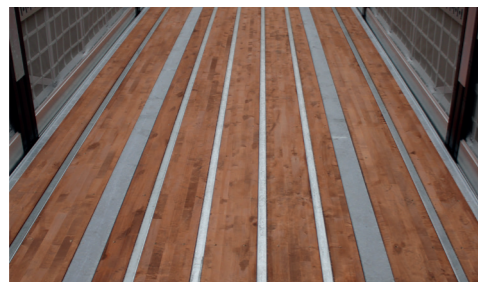
## Options for flatbeds

Front panel option possible  
Different configurations of Safe-Control

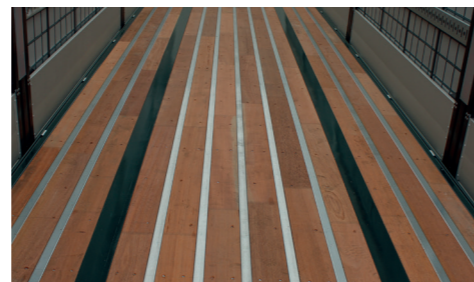


### Floor

From traditional to the most resistant



35mm laminated hardwood with steel Omegas



Hardwood with anti-puncture protection and steel Omegas

## Options for curtainsiders

From the 900gr/m<sup>2</sup> curtain to the reinforced lateral sides with side boards.



Reinforced anti-theft tarpaulin with reinforced stakes

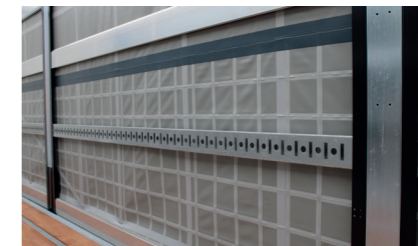


Dropsides

### Sideplanks



Wood



Steel



Aluminium

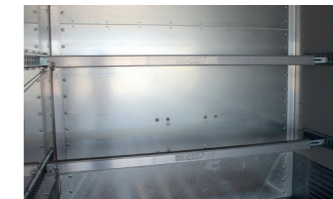
## Options for vans



Double floor (integral or surface-mounted)



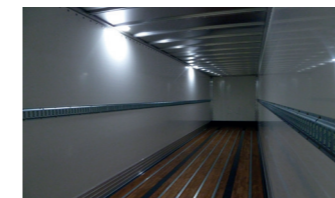
Cargo control tracks



Load restraint bar



Ventilator



Interior light



Piek Noise Standard compliance



Platform step



Montoire handle

## Options

Our vehicles offer the possibility of integrating a wide range of optional equipment to simplify their use or to adapt them to the particular needs of each operation.

### Security



RCP



M&B Inside



APCS



Safe-Control

### Boxes



Different pallet sizes, from 8 to 36 pallets



8 pallets in the wheelbase



Cross box



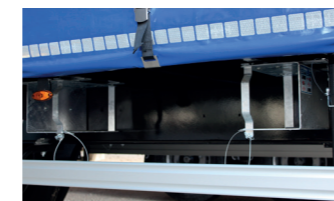
Toolbox



Document holder



Side-guards (cyclist rails)



Planks box

### Working lights



Near landing legs



Behind the running gear



Rear crossbeam

### Telematics



Telematics and TPMS (\*)

(\*) **ABERG Connect** Telematics System complies with Regulation R141 and makes the driver aware in real time of vehicle position and provides information on the vehicle, such as TPMS

### Fire extinguishers



On landing legs



On front panel

### Wheels



Wheel 385/65 R22.5 or 385/55 R22.5



Aluminium rims



Spare wheel

### Tailgate connector



One socket



Two sockets

### Connection



Side sidling system of couplings

### Landing legs



Electrics

### Chassis finish



Hot dip galvanizing



Painted

### Advertising



On side wall painted advertising or digital printing, on curtainsider or van



On rear door