

Our Services

Maintenance—repair
fruehauf.com/centres-service

Spare parts
fruehauf.com/servicepro

Finance
fruehauf.com/financement

Used vehicles
fruehauf.com/occasions



Non-binding document - 384, rue Gutenberg 58320 - Pougues les Eaux - Do not litter

MaxiSpeed

Versatility for performance



24 à 28, avenue Jean Mermoz - BP 209
89002 AUXERRE CEDEX - FRANCE
Tél. : +33 (0) 3 86 94 42 42
contact@fruehauf.com

fruehauf.com



AFNOR Cert. 10104

MaxiSpeed Range

MaxiSpeed sliding curtain vehicles are the ideal solution for just-in-time logistics requirements: simple loading/unloading operations, reduced downtime, improved productivity.

The MaxiSpeed range meets all transport needs, from maximum payload to maximum volume:

- Gooseneck 150
- Gooseneck 120
- Gooseneck 90
- Mega
- Available in 2 and 3 axles

The needs of transport companies have changed significantly in recent years, with a strong return to the demand for robustness, without premature wear and, above all, without the risk of equipment downtime.

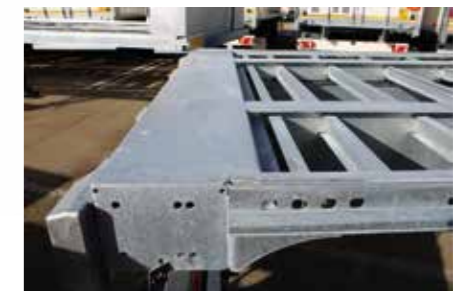
With vehicles in full-time use, downtime is extremely costly.

FRUEHAUF has always designed and manufactured robust equipment, whose reputation in the market is well established.

Our mechanically welded platforms, floors, and series bodies are specially designed for intensive and severe use.



Front face with protection



Last beam near the rear crossbar for passage of on-board trolleys



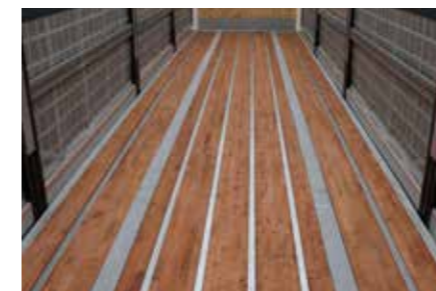
Full protection of the rear assembly with galvanized steel buffers



Welded structural steel platform with I-beams spaced at 400 mm intervals



Running gear, the best technology from leading axle manufacturers



Laminated hardwood floor 35mm thick with galvanized steel omega



Certificate XL

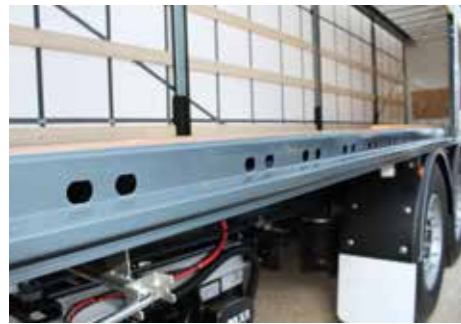


Protection of lockrods

MaxiSpeed Range

The MaxiSpeed range has been designed for maximum safety, focusing on two key aspects:

- Safety of users in contact with the vehicle, through the ergonomic design of parts and equipment.
- Improved road safety through the integration of electronic driver assistance systems, enhancing the vehicle's passive and active safety.



MULTIFIX siderave



2.5-tonne lashing rings



Standard siderave



Taillift



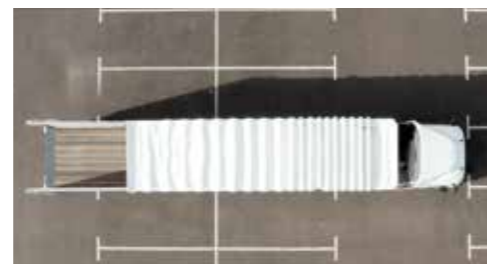
Pallet truck box



Kit for truck-mounted forklift



Quick-Slide



Electric roof

Lifting roof



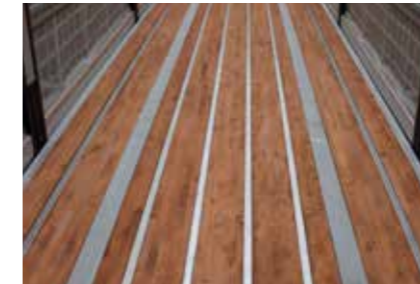
Liftop



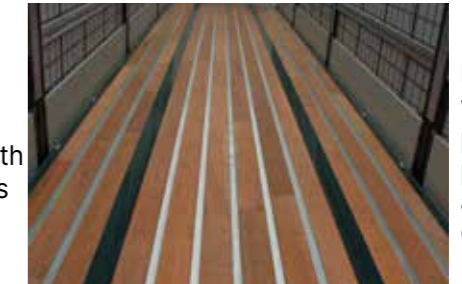
Liftop 5p

Floor

From traditional to the most resistant



35 mm laminated hardwood with steel Omegas



Hardwood with anti-puncture protection and steel Omegas

Sliding curtains

From tarpaulin 900g/m2 to reinforced side panels with side rails



Reinforced anti-theft tarpaulin with reinforced stakes



Dropsides

Side-planks



Wood



Steel



Aluminum

Accessibility



Platform step



Montoire handle

Options

Our vehicles offer the possibility of integrating a wide range of optional equipment, making them easier to use or allowing them to be adjusted to the specific needs of Sati.

Security



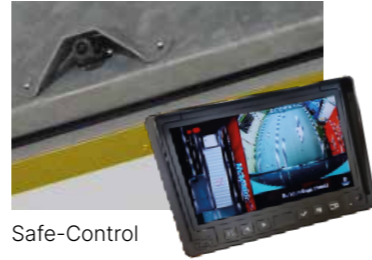
RCP



M&B Inside



APCS



Safe-Control

Box



Various closed palletboxes, from 8 to 36 pallets



8 pallets in the wheelbase



Cross box



Toolbox



Document holder



Side-guards (cyclist rails)



Planks box

Work light



Near landing legs



Behind the running gear



Rear crossbeam

Telematics



Telematics and TPMS (*)

(*) **ABERG Connect** Telematics System complies with Regulation R141 and makes the driver aware in real time of vehicle position and provides information on the vehicle, such as TPMS

Fire extinguishers



On landing legs



On the front panel

Wheels



Wheel 385/65 R22.5 or 385/55 R22.5



Aluminium rims



Spare wheel

Tailgate connector



One socket



Two sockets

Connection



Side sliding system of couplings

Landing legs



Electrics

Chassis finish



Hot-dip galvanizing



Painted

Advertising



On side wall painted advertising or digital printing, on curtainsider or van



On rear door