

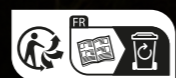
Our Services

Maintenance - repairs
fruehauf.com/centres-service

Spare parts - fruehauf.com/servicepro

Funding
fruehauf.com/financement

Used vehicle - fruehauf.com/occasions



24 à 28, avenue Jean Mermoz - BP 209
89002 AUXERRE CEDEX - FRANCE
Tél. : +33 (0) 3 86 94 42 42
contact@fruehauf.com

fruehauf.com

Document non contractuel - 384, rue Gutenberg 58320 - Pouygueux les Eaux - Ne pas jeter sur la voie publique



ExpressLiner

Safe freight transport



AFNOR Cert.10104

Built to last

The ExpressLiner van is the ideal choice for ensuring the safe transport of goods, with particular attention paid to delicate items such as electronics, medicines, wines, and spirits.

The ExpressLiner range is designed to meet all transport requirements, adjusting its capacity to suit loads and volumes.

Transport companies have specific expectations when it comes to operating their vehicles, seeking exceptional durability and resistance to wear and tear over time, with the aim of minimizing the risk of downtime due to equipment problems.

At FRUEHAUF, we have always designed and manufactured equipment that is recognized in the market for its high level of robustness. Our mechanically welded platforms, solid floors, and bodies are specially designed to withstand intensive use and demanding conditions.



Front protection by steel plinth, welded to the shelf.



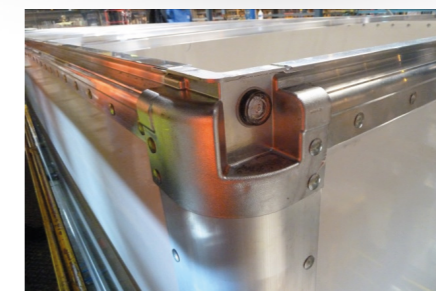
Mechanically welded platform with crossbeams in I spaced at 400 mm intervals.



An exclusive body assembly, ensuring optimal panel strength and rigidity.



35 mm hardwood laminated floor with steel omega profiles.

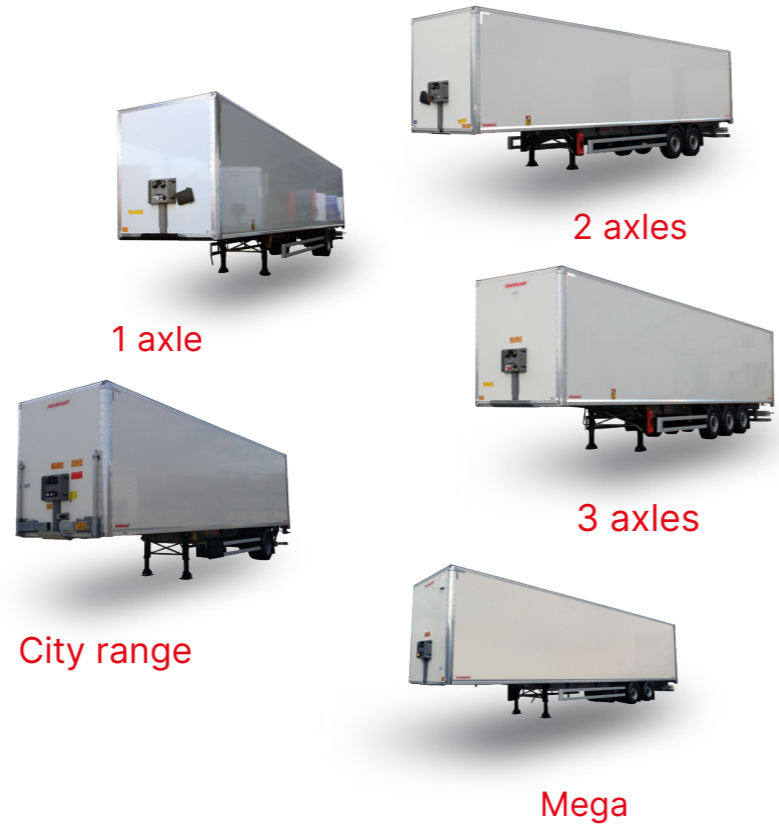


Roof assembly ensuring strength and perfect waterproofing. Protection of top rear lights.



Reinforced rear frame for frequent docking.

The ExpressLiner range



Customization

Our vans offer customization options to meet your specific needs.

Doors



Roller shutter door



Double reardoor with 2 lockrods on the exterior of each doorleaf



Double rear door with integrate lockrods



EasyUp pneumatic door

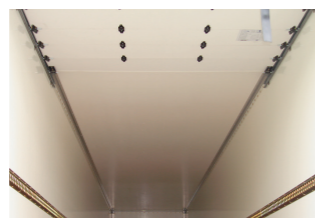
Roofs



Aluminium roof



Translucent Polyester

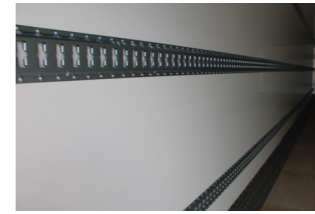


Smooth plywood or insulated

Amenities



Double deck surface-mounted or built-in



Cargo securing rails



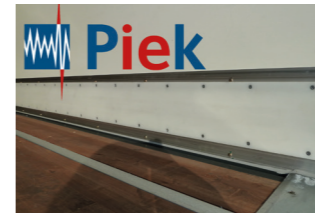
Load stop bar



Ventilation



roof lamps



Compliance of PIEK norm

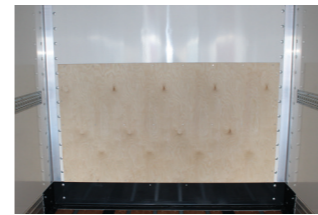


Platform step



Montoire handle

Reinforced protection



Front panel lining



Steel-reinforced baseboard



Reinforced coupling running plate



Various corner buffers



Chequered striated



Hardwood plank floor



Lighting rear side

Taillift



Retractable taillift DHOLLANDIA. Different lift capacity.



Retractable taillift BÄR



Folding taillift

Our vehicles offer the possibility of integrating a wide range of optional equipment, making them easier to use or allowing them to be adjusted to the specific needs of each operation.

Security



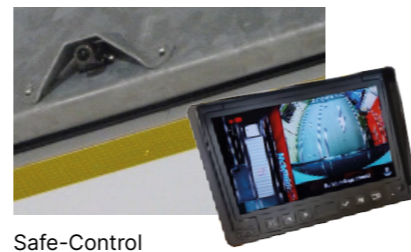
RCP



M&B Inside

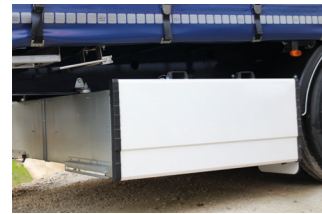


APCS



Safe-Control

Box



Various closed palletboxes, from 8 to 36 pallets



8 pallets in the wheelbase



Cross box



Toolbox



Document holder



Side-guards (cyclist rails)

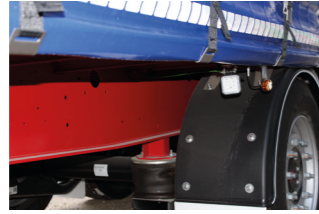


Planks box

Work light



Near landing legs



Behind the running gear



Rear crossbeam

Telematics



Telematics and TPMS (*)

(*) **ABERG Connect** telematics system compliant with R141 regulations, providing real-time location and vehicle information such as TPMS.

Fire extinguishers



On landing legs



On the front panel

WHEELS



Wheel 385/65 R22.5 or 385/55 R22.5



Aluminium rims



Spare wheel

Tailgate connector



One socket



Two sockets

Connection



Side sliding system of couplings

Landing legs



Electric

Chassis finish



Hot-dip galvanizing



Paint

Advertising



On side wall painted advertising or digital printing, on curtainsider or van



On rear door